

# PRO TOOLS

GET THE JOB DONE RIGHT



ISSUE 03 — JULY - SEPTEMBER 2026

OFFERS VALID 1 JULY - 30 SEPTEMBER 2026

 **BOXO**

**POWERHAND**

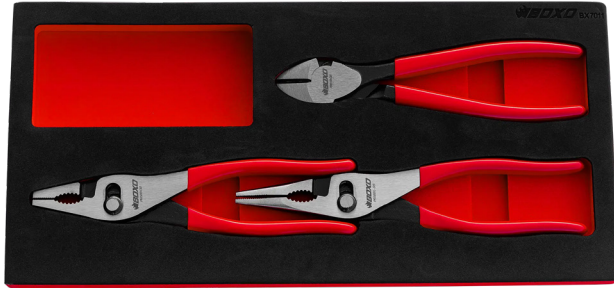
**HURRICANE**

**NEW**

**PLIER SET  
BX7011**



- 3-piece set for all essential gripping and cutting tasks in the workshop
- 8" & 10" slip joint pliers give adjustable grip for fasteners | fittings | and hoses
- 8" diagonal side cutters ensure clean | controlled cuts on wire and cable ties etc
- Durable steel construction for daily shop use
- Supplied in dual colour laser cut EVA foam
- 8" diagonal side cutters
- 8" Spring loaded slip joint pliers
- 9.5" Spring loaded slip joint pliers



€109.75

£89.95

**NEW**

**PLIER SET  
BX7010**



- 3-piece set
- Extra-long 11" reach for deep engine bays and tight under bonnet access
- Straight | 45° and 90° noses handle clips | wiring | and fasteners at any angle
- Forged steel construction built for daily professional workshop use
- Supplied in dual colour laser cut EVA foam
- 11" Long nose straight pliers
- 11" Long nose 45° pliers
- 11" Long nose 90° pliers



€107.31

£87.95

**NEW**

**PLIER SET  
BX7008**



- 4-piece set for a variety of workshop tasks
- Dipped handles for controlled & secure grip
- Hardened steel jaws
- Supplied in dual colour laser cut EVA foam
- 8" Combination pliers
- 8" Long nose pliers
- 11" High leverage cutting pliers
- 12" Adjustable water pump pliers



€145.13

£118.95

**NEW**

**PLIER SET  
BX7012**



- 11-piece set for all cutting | gripping | clamping | and reach tasks
- Selection of diagonal and flush cutters
- Wide range of slip joint | combination | and water pump pliers handle fasteners | hoses & fittings etc
- Long nose and extended-reach pliers access deep engine bays and tight spaces with ease
- Self-opening spring designs reduce hand fatigue during repetitive workshop use
- Supplied in dual colour laser cut EVA foam
- 6" diagonal side cutter
- 8" diagonal side cutter
- 11" diagonal cutter
- 7" spring loaded flush cutters
- 8" combination pliers
- 8" long nose pliers
- 12" water pump pliers
- 8" spring loaded slip joint pliers
- 9.5" spring loaded slip joint pliers
- 10" spring loaded slip joint pliers
- 11" long nose pliers straight



€304.97

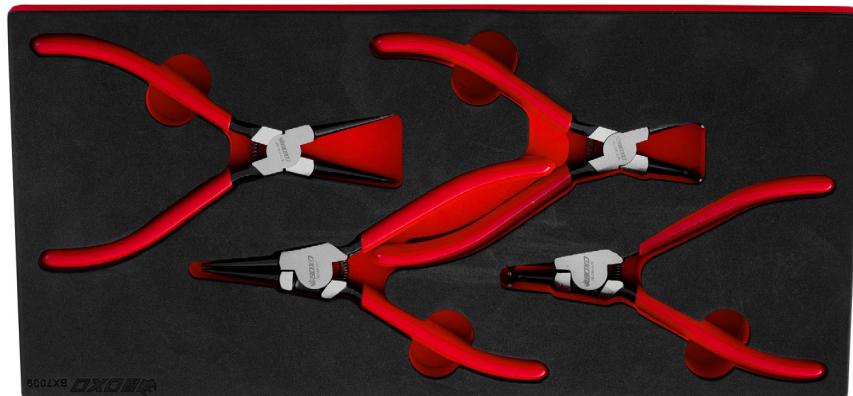
£249.95

NEW

## CIRCLIP PLIER SET BX7009

**BOXO**

- 4-piece set for precision circlip control
- Includes both internal and external pliers in straight and 90° angles for versatile snap-ring work
- Premium alloy steel construction
- Accurate | secure tips engineered to manipulate circlips without bending or damage
- Supplied in dual colour laser cut EVA foam
- 7" internal circlip pliers
- 7" internal circlip 90° pliers
- 7" external circlip pliers
- 7" external circlip 90° pliers



€87.79

£71.95



NEW

## AVIATION SPANNER SET BX7002

**BOXO**

- 9-piece set thin-walled 12-point double ring spanners
- Slimline form is engineered for accessing and loosening tight fittings in confined workspaces.
- Extra-long handle design provides maximum leverage for increased torque
- Supplied in dual colour laser cut EVA foam
- 8 x 10mm | 10 x 12mm | 11 x 13mm | 14 x 15mm | 16 x 17mm | 18 x 19mm | 20 x 22mm | 21 x 23mm | 22 x 24mm

€164.65

£134.95

NEW

## DIGITAL TYRE INFLATOR WITH QUICK CONNECTOR NT-0011

- Patented quick connector ensures a completely airtight | reliable seal up to 130psi
- Enhanced large backlit display for improved visibility
- Robust rubber-shelled housing with IP65 protection and integrated hanging hook
- Wide measuring range from 0.2 to 10 bar (2.9 to 145 psi)
- Multiple measurement units: bar | psi | kPa | and kg/cm<sup>2</sup>
- Individually calibrated and serialised to meet DS/EN 12645:2014 standards

€91.45

£74.95



NEW LINE



**NEW**

**120T SLIM HEAD RATCHET SET PUSH BUTTON RELEASE  
BX918-R**

- 3-piece set 1/4" | 3/8" & 1/2" ratchets
- Ultra-smooth & precise 120-tooth ratcheting mechanism offers a 3° ratcheting arc
- Sealed mechanism extends the tool's lifespan
- Slim head design
- Manufactured from full mirror polished CR-V
- Supplied in dual colour laser cut EVA foam
- Quick release button

**€129.27**

**£105.95**



**NEW LINE**



**NEW**

**TORX & HEX EXTRACTOR BIT SOCKET SET  
BX876-R2**

- 1/4" & 3/8" drive
- For the easy removal of rounded Torx & Hex screws
- Twisted design ensures maximum purchase
- High polished chrome finish
- Supplied in dual colour laser cut EVA foam
- 1/4" drive | TE10 | TE15 | TE20 | TE25 | TE27 | TE30 | TE40 | H2 | H2.5 | H3 | H4 | H5 | H6
- 3/8" drive | H7 | H8

**€73.15**

**£59.95**



**NEW**

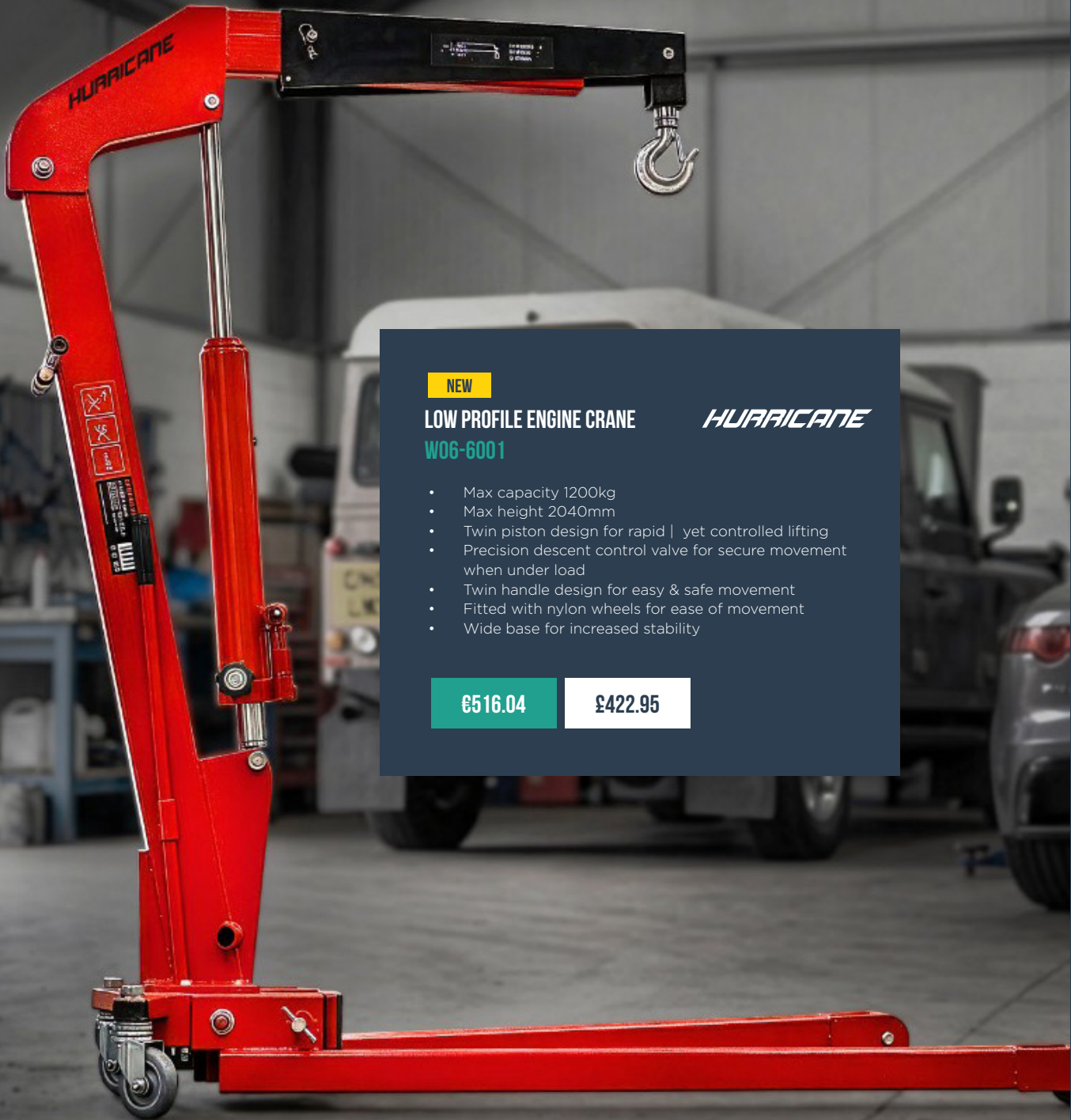
**QUICK LIFT TRANSMISSION JACK  
W06-1507**

- Max capacity 1200kg
- Max height 2040mm
- Twin piston design for rapid | yet controlled lifting
- Precision descent control valve for secure movement when under load
- Twin handle design for easy & safe movement
- Fitted with nylon wheels for ease of movement
- Wide base for increased stability

**€414.78**

**£339.95**





NEW

**LOW PROFILE ENGINE CRANE**  
**W06-6001**

*HURRICANE*

- Max capacity 1200kg
- Max height 2040mm
- Twin piston design for rapid | yet controlled lifting
- Precision descent control valve for secure movement when under load
- Twin handle design for easy & safe movement
- Fitted with nylon wheels for ease of movement
- Wide base for increased stability

€516.04

£422.95

**HURRICANE**

NEW

**NON-AEROSOL PRESSURISED SPRAYER**

**W04-4251**

- Non-aerosol refillable workshop sprayer
- Pressurised by standard Schrader® tyre valve on top of filling cap
- Use any standard workshop compressed air system to pressurise
- 80-120PSI operating pressure
- 150PSI maximum pressure
- 0.95 litre capacity.
- Suitable for light oils | penetrating fluids | solvents and degreasers

€59.72

£48.95



**HURRICANE**

NEW

**AUTO BODY REPAIR KIT**

**W06-2503**

- For auto body alignment & straightening | ideal for post-damage restoration
- Includes lifting | bending | pulling | pushing & general metal manipulation
- Complete master kit with extension pieces | spreader | heel | toe and plates
- Supplied in heavy duty blow moulded case with castors for easy transport and storage
- Capacity 10 tonne
- Minimum lift 335mm
- Stroke 130mm
- Manually operated hydraulic pump

€237.86

£194.95

**HURRICANE**

NEW

**CAST STEEL VICE**

**W04-3002**

- Workshop vice with pre-drilled mounting points
- 20mm jaws.
- Continuous screw thread for consistent | smooth movement.
- Manufactured from cast steel
- Jaw size 125mm
- Max opening 125mm
- Throat depth 64mm
- Anvil size 6 x 48 mm
- Clamping force 30kN (3000kg)
- Weight 10kg

€128.05

£104.95



NEW

### 2-IN-1 UTILITY KNIFE/SCRAPER

POWERHAND

SIN-900.0008

- Combines cutting and scraping functions for versatility of use
- Integrated paint tin/can opener hook
- Ergonomic handle provides a secure grip
- Quick-release mechanism for hassle-free blade changes
- 3-position adjustable blade at angles of 0° | 45° and 90°
- Steel alloy
- Includes 5 blades



€23.12

£18.95

NEW

### WHEEL STUD/BOLT/HUB THREAD REPAIR KIT

POWERHAND

SIN-450.0012

- Use for the repair of wheel studs | bolts | nuts and hub threads
- Includes a wheel stud installer for new studs
- Split-die design allows alignment on undamaged thread sections for accurate restoration without further damage
- Includes precision cutting/reforming tools to clean and re-establish thread profiles
- External threads M12x1.25 | M12x1.5 | M14x1.5
- Internal threads: M12x1.25 | M12x 1.5 | M12x1.75 | M14x1.5



€54.84

£44.95

NEW

### 1/4" DRIVE REAMER SET - ABS SENSORS

POWERHAND

SIN-450.0201

- 7-piece set
- Removes dirt | rust and other corrosion particles
- Ensures precise positioning of the new sensor
- Includes specialist twist drill | used for removing stubborn old sensors
- Suitable for use with multiple car types | including VAG
- Includes
- M10 x 133mm twist drill
- 6 x Reamer bits
- 10 x 150mm | 11 x 70mm | 14 x 32mm | 15 x 23mm | 18 x 23mm | 18 x 34mm



€106.09

£86.95

NEW

### LEFT HANDED HSS-G C05 DRILL SET

POWERHAND

SIN-450.0007

- 19-piece set
- Made from 5% pure M35 cobalt high speed steel
- Use this left hand twist drill bit set for the removal of broken studs/screws etc
- Supplied in anti-spill plastic case
- Sizes 1.0-10.0mm | in 0.5mm increments



€60.94

£49.95

NEW LINE

POWERHAND

**POWERHAND****NEW****UNIVERSAL DIRECT FIT OIL FUNNEL MASTER SET****SIN-900.0559V2**

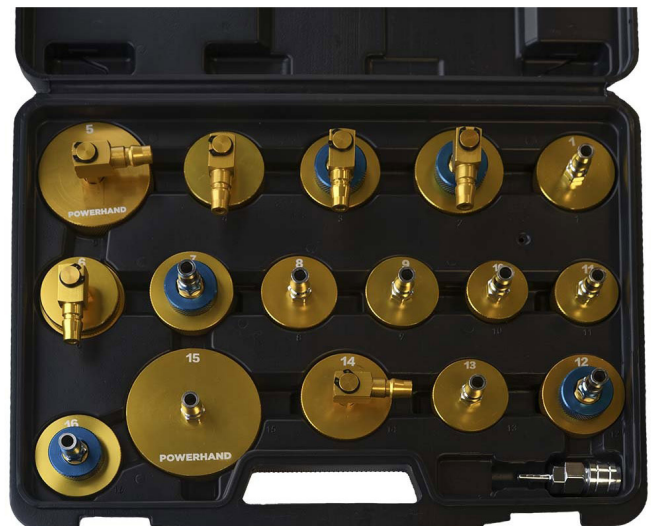
- 19-piece set
- Use for fast | mess-free oil changes on a variety of vehicles
- Now includes Nissan/Renault 1.5 & 1.9dCI | VAG 1.5 TSI (2018) | VAG 2.0 TDI (2013) | Mercedes Benz & Renault adaptors
- Direct-fit design
- Includes multiple adapters to securely connect to most oil filler openings
- Ensures a tight | spill-proof seal

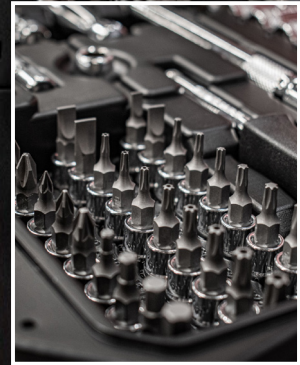
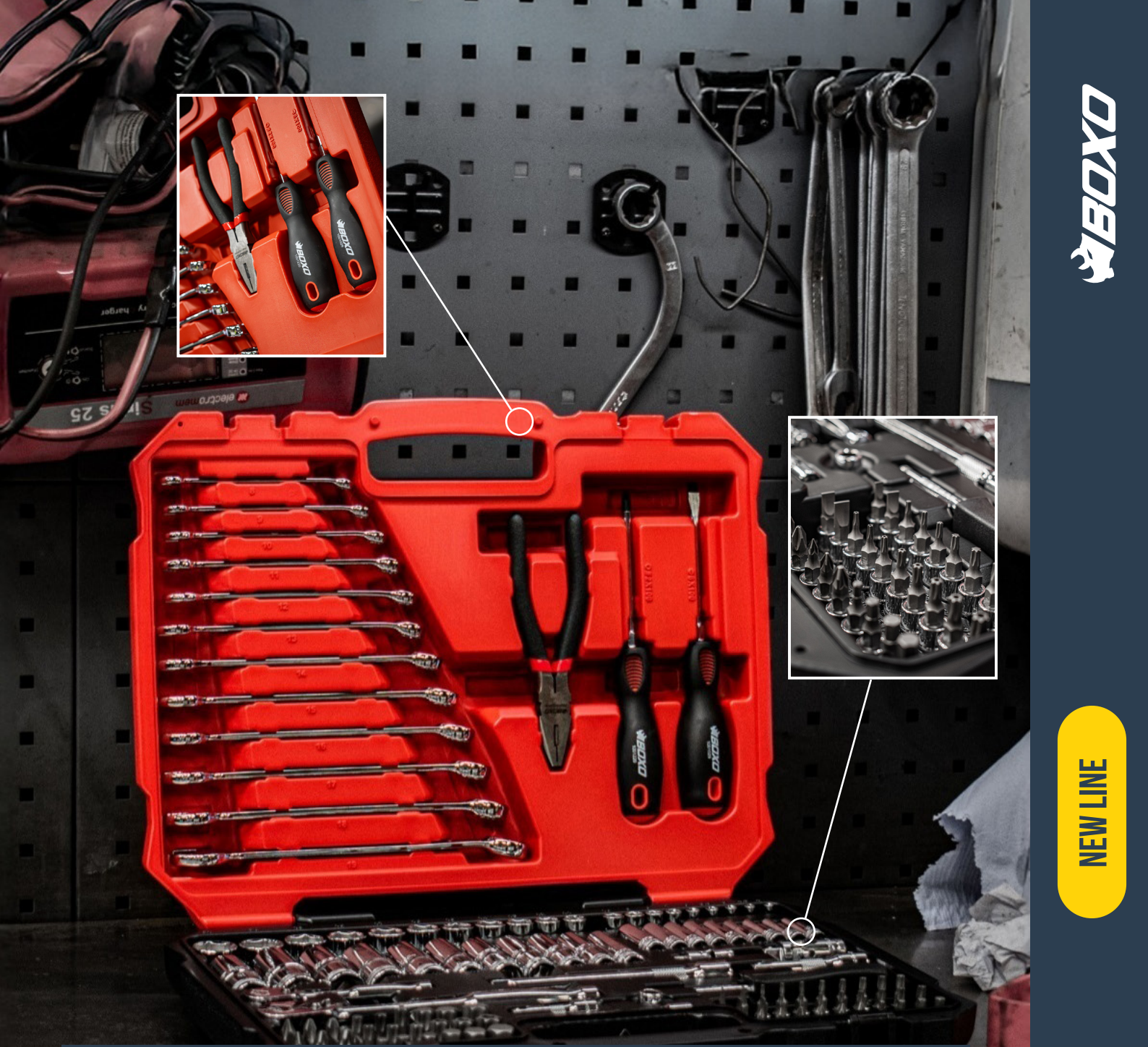
**€95.11****£77.95****POWERHAND****NEW****3.9MM FULLY ARTICULATED INSPECTION CAMERA****SIN-120.0201**

- 4-way | full 360° articulation for comprehensive inspection views
- Slim 3.9mm camera for excellent access with 1m long camera lead
- Clear and easy to read large 4.5" screen.
- 70° field of vision.
- Adjustable camera brightness to suit different applications.
- Approx 180 minute run-time on full battery.
- IP67 rated for dust and water resistance.
- Battery 2000mAh.
- Includes storage case | USB-C charging lead & detachable wrist strap

**€478.22****£391.95****POWERHAND****NEW****BRAKE BLEEDER CAP SET****SIN-160.0296**

- 17-piece set
- 16 caps & one quick change coupler ensure near universal vehicle coverage
- Quick change coupler with one way fluid shut off valve for easy change over to different vehicles
- Durable & long lasting all metal construction
- Stored in a handy blow moulded case

**€118.29****£96.95**



**NEW LINE**

**NEW**

## 1/4" & 3/8" DRIVE MASTER TOOL SET

**BXB010**

- 122-piece set
- High polished chrome finish
- 1/4" shallow sockets | 4.0 | 5.0 | 6.0 | 7.0 | 8.0 | 9.0 | 10.0mm
- 1/4" deep sockets | 4.0 | 5.0 | 6.0 | 7.0 | 8.0 | 9.0 | 10.0mm
- 1/4" bit sockets
- Torx bit sockets: T8-T30
- Tamperproof torx bit sockets: T8-T30
- Hex bit sockets: H3-H6
- Phillips bit sockets: PH0 | PZ1 | PZ2
- Pozidriv bit sockets: PZ0 | PZ1 | PZ2
- Slotted bit sockets: 4-7mm
- 3/8" shallow sockets | 11.0 | 12.0 | 13.0 | 14.0 | 15.0 | 16.0 | 17.0 | 18.0 | 19.0 | 20.0 | 21.0mm
- 3/8" deep sockets | 11.0 | 12.0 | 13.0 | 14.0 | 15.0 | 16.0 | 17.0 | 18.0 | 19.0 | 20.0 | 21.0mm
- Combination spanners | 8.0 | 9.0 | 10.0 | 11.0 | 12.0 | 13.0 | 14.0 | 15.0 | 16.0 | 17.0 | 18.0mm
- Ratchets | 1/4" 90T | 3/8" 90T
- 1/4" extension bars | 50mm | 100mm
- 1/4" universal joint
- 1/4" spinner handle
- 3/8" extension bars | 75mm | 150mm
- 3/8" bit coupler
- 3/8" universal joint
- Screwdrivers | PZ2 | SL6
- 6" combination pliers
- 27pc 5/16" bit set
- Supplied in blow moulded carry case

**€362.31**

**£296.95**

All prices are exclusive of VAT

## 1/4" DRIVE SOCKET & BIT SET

### BXB004

- 52-piece set
- High polished chrome finish
- 1/4" sockets | 4.0 | 5.0 | 6.0 | 7.0 | 8.0 | 9.0 | 10.0 | 11.0 | 12.0 | 13.0mm
- 1/4" deep sockets | 4.0 | 5.0 | 6.0 | 7.0 | 8.0 | 9.0 | 10.0 | 12.0 | 13.0mm
- 1/4" bit sockets | PH1 | PH2 | PH3 | PZ1 | PZ2 | PZ3 | H3 | H4 | H5 | H6 | H7 | H8 | T8 | T10 | T15 | T20 | T25 | T27 | T30 | T40 | SL4 | SL5.5 | SL6 | M5 | M6 | M
- 1 x 1/4" x 50mm extension bar
- 1 x 1/4" x 100mm extension bar
- 1 x 1/4" x 50mm magnetic extension bar
- 1 x 1/4" universal joint
- 1 x 1/4" 90T ratchet
- 1 x 1/4" spinner handle
- 1 x 1/4" bit coupler
- Supplied in blow moulded carry case

€120.73

£98.95



## 3/8" DRIVE MASTER SOCKET SET

### BXB019

- 60-piece set
- CR-V S2 steel
- Diamond knurling for improved grip and control
- High polished chrome finish
- 3/8" shallow sockets | 8.0 | 9.0 | 10.0 | 11.0 | 12.0 | 13.0 | 14.0 | 15.0 | 16.0 | 17.0 | 18.0 | 19.0 | 20.0 | 21.0 | 22.0mm
- 3/8" deep sockets | 8.0 | 9.0 | 10.0 | 11.0 | 12.0 | 13.0 | 14.0 | 15.0 | 16.0 | 17.0 | 18.0 | 19.0 | 20.0 | 21.0 | 22.0mm
- 3/8" spark plug sockets | 16.0 | 21.0mm
- 1/4" bit sockets | T10 | T15 | T20 | T25 | T27 | T30 | T40 | SL4 | SL5.5 | SL6.5 | H2 | H2.5 | H3 | H4 | H5 | H6 | H8 | PH1 | PH2 | PH3
- 1 x 3/8" x 45mm extension bar
- 1 x 3/8" x 250mm extension bar
- 1 x 3/8" x 75mm extension bar
- 1 x 1/4" spinner handle
- 1 x 3/8" universal joint
- 1 x 3/8" bit coupler
- 1 x 3/8" 90T ratchet
- 1 x 1/4" bit coupler
- Supplied in blow moulded carry case

€156.11

£127.95



### 3/8" DRIVE MASTER IMPACT SOCKET SET SHALLOW & DEEP BxB021

- 40--piece set
- Shallow sizes | 6 | 7 | 8 | 9 | 10 | 11 | 12 | 13 | 14 | 15 | 16 | 17 | 18 | 19 | 20 | 21 | 22 | 23 | 24mm
- Deep sizes | 6 | 7 | 8 | 9 | 10 | 11 | 12 | 13 | 14 | 15 | 16 | 17 | 18 | 19 | 20 | 21 | 22 | 23 | 24mm
- 3" impact extension
- Impact universal joint with reinforcement ring
- Supplied in blow moulded case

€229.32

£187.95



### 1/2" DRIVE MASTER IMPACT SOCKET SET SHALLOW & DEEP BxB022

- 40-piece set
- Shallow sizes | 10 | 11 | 12 | 13 | 14 | 15 | 16 | 17 | 18 | 19 | 20 | 21 | 22 | 23 | 24 | 26 | 27 | 30 | 32mm
- Deep sizes | 10 | 11 | 12 | 13 | 14 | 15 | 16 | 17 | 18 | 19 | 20 | 21 | 22 | 23 | 24 | 26 | 27 | 30 | 32mm
- 5" impact extension
- Impact universal joint with reinforcement ring.
- Supplied in blow moulded case



€263.48

£215.95

### 1/4" DR SOCKET SET WITH T HANDLE + BIT HOLDER P503-R2

- 33-piece set
- S2 Steel
- 1/4" bits | Phillips | slotted | Torx | tamperproof Torx | Hex
- 1 x 1/4 Hex to 1/4 Square Adaptor
- 1 x Ratchet holder
- Supplied in blow moulded carry case

€53.62

£43.95



### MASTER CROW FOOT SET BX654-R2

- 20-piece set
- 12pt sockets for twice the engagement
- Ideal for restricted applications, including fuel, brake & transmission fluid lines, power steering systems, steering rack tie ends and manifolds
- High polished chrome finish
- Supplied in dual-colour laser-cut EVA foam
- 3/8" drive 10 | 11 | 12 | 13 | 14 | 15 | 16 | 17 | 18 | 19mm
- 1/2" drive 20 | 21 | 22 | 23 | 24 | 25 | 26 | 27 | 30 | 32mm

€318.39

£260.95



### 3/8" & 1/2" DRIVE MASTER IMPACT SOCKET SET BX751-R

- 81-piece set
- 1/2" deep 10-24, 26, 27, 30 & 32mm
- 1/2" standard 10-24, 26, 27, 30 & 32mm
- 3/8" deep 8-22 & 24mm
- 3/8" standard 8-22 & 24mm
- 3/8" & 1/2" wobble drive
- 3/8" to 1/2" adaptor
- 1/2" to 3/8" adaptor
- 1/2" to 3/4" adaptor
- 3" extension, 3/8" & 1/2" drive
- 5" extension, 1/2" drive
- 6" extension, 3/8" drive
- 10" extension, 3/8" & 1/2" drive

€490.42

£401.95



**3/8" DRIVE IMPACT TORX BIT SOCKET SET**  
**BX766-R**



- 9-piece set
- For use with impact tools
- T10 | T15 | T20 | T25 | T27 | T30 | T40 | T45 | T50



€81.69

£66.95

**3/8" DRIVE IMPACT HEX BIT SOCKET SET**  
**BX767-R**



- 14-piece set
- For use with impact tools
- H3 | H4 | H5 | H6 | H7 | H8 | H9 | H10 | H11 | H12 | H13 | H14 | H15 | H16



€117.07

£95.95

**1/2" DRIVE IMPACT SHALLOW SOCKET SET**  
**BX768-R**



- 18-piece set
- For use with impact tools
- 10mm | 11mm | 12mm | 13mm | 14mm | 15mm | 16mm | 17mm | 18mm | 19mm | 20mm | 21mm | 22mm | 24mm | 26mm | 27mm | 30mm | 32mm



€137.81

£112.95

**1/2" DRIVE IMPACT TORX BIT SOCKET SET**  
**BX770-R**



- 8-piece set
- For use with impact tools
- Supplied in dual-colour laser-cut EVA foam
- T30 | T40 | T45 | T50 | T55 | T60 | T70 | T80



€101.21

£82.95

**1/2" DRIVE IMPACT HEX BIT SOCKET SET**  
**BX771-R**



- 15-piece set
- For use with impact tools
- H5 | H6 | H7 | H8 | H9 | H10 | H11 | H12 | H13 | H14 | H15 | H16 | H17 | H18 | H19



€154.89

£126.95

**ADAPTOR SET**
**BX772-R**

- 6-piece set
- For use with impact tools
- Supplied in dual-colour laser-cut EVA foam
- 1/4" F to 3/8" M
- 3/8" F to 1/2" M
- 1/2" F to 3/8" M
- 1/2" F to 3/4" M
- 3/4" F to 1/2" M

**€60.94**
**£49.95**

**3/8" X 1/2" DRIVE IMPACT EXTENSION BAR SET**
**BX781-R**

- 9-piece set
- For use with impact tools
- Supplied in dual-colour laser-cut EVA foam
- 3/8" drive | 50mm | 75mm | 100mm | 150mm | 200mm
- 1/2" drive | 75mm | 125mm | 200mm | 300mm

**€141.47**
**£115.95**

**ULTRA THIN DOUBLE OPEN END SPANNER SET**
**BX391-R2**

- 7-piece set
- Full mirror polished chrome
- Up to 38% thinner than standard BOXO open-ended spanners
- Lengths 148mm to 250mm
- Ideal for anti-rollbar links and caliper slide bolts
- Supplied in dual-colour laser-cut EVA foam
- 6.0 x 7.0 | 8.0 x 9.0 | 10.0 x 11.0 | 12.0 x 13.0 | 14.0 x 15.0 | 16.0 x 17.0 | 18.0 x 19.0mm


**€120.73**
**£98.95**
**ULTRA THIN DOUBLE OPEN END SPANNER SET**
**BX564-R2**

- 6-piece set
- Full mirror polished chrome
- Up to 38% thinner than standard BOXO open-ended spanners
- Lengths 148mm to 250mm
- Ideal for anti-rollbar links and caliper slide bolts
- Supplied in dual-colour laser-cut EVA foam
- 20.0 x 22.0 | 21.0 x 23.0 | 22.0 x 24.0 | 24.0 x 27.0 | 25.0 x 28.0 | 30.0 x 32.0mm


**€218.34**
**£178.95**


## HEX T-HANDLE SET BX020-R

- 8-piece set
- Non-slip comfort-grip handles
- High polished chrome finish
- Ball-ended - 25° movement up to 6mm and 23° on 8mm & 10mm
- Supplied in dual colour laser cut EVA foam
- 2.0 | 2.5 | 3.0 | 4.0 | 5.0 | 6.0 | 8.0 | 10.0mm

€107.31

£87.95



## TORX T-HANDLE SET BX021-R

- 9-piece set
- Non-slip comfort-grip handles
- High polished chrome finish
- Supplied in dual colour laser cut EVA foam
- T10 | T15 | T20 | T25 | T27 | T30 | T40 | T45 | T50

€117.07

£95.95

## IMPERIAL T-HANDLE DUEL DRIVE HEX KEY SET BX141S-R

- 8-piece set
- High polished chrome finish
- Non-slip comfort grip handles
- Supplied in dual colour laser cut EVA foam
- 5/64" | 3/32" | 1/8" | 5/32" | 3/16" | 1/4" | 5/16" | 3/8"

€102.43

£83.95



All prices are exclusive of VAT

### ADJUSTABLE UNIVERSAL HOSE CLAMP PLIERS

VG521

- Adjustable rotating head, ideal for restricted access applications
- Fine tooth ratchet mechanism for precision adjustment
- Spring loaded jaws allow for single handed operation
- Comfort grip ergonomic handles
- 70mm jaw

€78.03

£63.95



### LONG REACH UNIVERSAL HOSE CLAMP PLIERS STRAIGHT

VG522

- Fine tooth ratchet mechanism for precision adjustment
- Spring loaded jaws allow for single handed operation
- Comfort grip ergonomic handles
- 50mm jaw

€63.38

£51.95



### LONG REACH UNIVERSAL HOSE CLAMP PLIERS ANGLED

VG523

- Fine tooth ratchet mechanism for precision adjustment
- Spring loaded jaws allow for single handed operation
- Comfort grip ergonomic handles
- 50mm jaw

€67.04

£54.95



**30° ANGLED PIPE BLOWGUN**  
**NB-0002**

- Green
- 100mm



€13.36

£10.95



**30° ANGLED PIPE BLOWGUN**  
**NB-0004**

- Green
- 500mm



€26.78

£21.95



**30° ANGLED PIPE BLOWGUN**  
**NB-0006**

- Green
- 1000mm

€29.22

£23.95



**30° ANGLED PIPE BLOWGUN**  
**NB-0008**

- Orange
- 500mm



€14.58

£11.95



**WORKWEAR TROUSER BLACK**

**BWW-WT**

- Removable zipped front pockets for flexible storage
- Various clips | pouches & tool storage options
- Abrasion resistant Codura® reinforced knees for maximum durability
- Reflective zip trim front & reflective BOXO logo on back for visibility in low light
- Sizes 30 | 32 | 34 | 36 | 38 | 40 | 42 | 44 all in S | M or L



€58.50

£47.95

**WORKWEAR SHORTS BLACK**

**BWW-WS**

- Removable zipped front pockets for flexible storage
- Various clips | pouches & tool storage options
- Abrasion resistant Codura® for maximum durability
- Reflective zip trim front & reflective BOXO logo on back for visibility in low light
- Sizes 30 | 32 | 34 | 36 | 38 | 40 | 42 | 44



€48.74

£39.95

**WORKWEAR T-SHIRT BLACK**

**BWW-T**

- Classic BOXO T-shirt made from 180gsm cotton
- Sizes S | M | L | XL | XXL | XXXL



€13.36

£10.95

**WORKWEAR POLO SHIRT**

**BWW-PS**

- Classic BOXO polo shirt made from 180gsm cotton
- Comfort side split at hem
- Perfect for everyday wear
- Sizes S | M | L | XL | XXL | XXXL



€17.02

£13.95

## WORKWEAR SWEATSHIRT

### BWW-SS



- Perfect winter workshop wear
- Stay warm without losing the flexibility to work effectively in
- Reinforced elbows for increased durability
- Sizes S | M | L | XL | XXL | XXXL



€29.22

£23.95

## WORKWEAR ZIP HOODIE

### BWW-ZH



- Drawstring hood to protect against cold/poor weather conditions
- Zipped pockets for secure storage
- Reinforced elbows for increased durability
- Sizes S | M | L | XL | XXL | XXXL



€36.54

£29.95

## WORKWEAR BODY WARMER

### BWW-BW



- Warm & stylish design
- Perfect winter wear
- Combines warmth with good movement and reach
- Zipped pockets for secure storage
- Sizes S | M | L | XL | XXL | XXXL

€47.52

£38.95



HURRICANE

OFFERS VALID FROM 1ST APRIL TO 30TH JUNE 2026

HURRICANE

NEW!

# PRESSURE WASHERS



W10-0001

€90.23

£73.95

Max pressure 135 bar  
Working pressure 85±5 bar  
Rated flow 5,0 litre/min  
Working flow 4.8±0.4 litre/min

**Includes**

Spray gun  
5m pressure hose  
Inlet adaptor  
5m cable  
1/2" quick connector  
250ml soap bottle  
Turbo nozzle  
Fixed brush



W10-0002

€165.87

£135.95

Max pressure 150 bar  
 Working pressure 95±5 bar  
 Rated flow 5.5 litre/min  
 Working flow 5.0±0.4 litre/min

**Includes**

- Spray gun with adjustable nozzle
- 5m pressure hose
- Inlet adaptor
- 5m cable
- 1/2" quick connector
- 500ml soap bottle
- Spray nozzle



W10-0004

€483.10

£395.95

Max pressure 225 bar  
 Working pressure 140±5 bar  
 Rated pressure 150 bar  
 Rated flow 8.5 litre/min  
 Working flow 8.0±0.4 litre/min

**Includes**

- Spray gun with 4 coloured nozzles
- 8m steel armoured hose
- Inlet adaptor
- 5m cable
- 1/2" quick connector
- 1000ml detergent tank
- Turbo nozzle
- Patio cleaner
- Adaptor for lance

NEW

**VEHICLE SKATE**  
**W06-3001**

- Max capacity 680kg per skate
- Max tyre width 11"
- HD nylon castors
- Reliable ratcheting mechanism

€ 169.53

£ 138.95



**HURRICANE**



**VEHICLE SKATE RACK**  
**W06-3002**

- Space saving design with the 4th skate becoming the rack

€ 46.30

£ 37.95

**HURRICANE**

**QUICK LIFT TRANSMISSION JACK**  
**W06-1506**

- Quick lift
- Auto return release control for ease of use
- Twin handle design for easy & safe moving
- Precision descent control valve, secure movement when under load
- Lifting capacity 600kg
- Ram shaft 30mm dia
- Min height 1100mm
- Max height 1985mm

€ 369.63

£ 302.95



**HURRICANE**

All prices are exclusive of VAT



**LOW-ENTRY HIGH-REACH RAPID-LIFT TROLLEY JACK** *HURRICANE*  
**W06-0007**

- With its folded chassis for increased rigidity, safety descent valve for a safe, controlled decline & its twin piston design for a smooth, rapid lift, this 3T trolley jack is a must-have for the workshop
- Lifting capacity 3.0 tonne
- Min height 80mm
- Max height 500mm
- Weight 32.4kg

€304.97

£249.95

**HURRICANE**

**LCD CIRCUIT TESTER**

**SIN-400.3116**

- 3-48 volt DC tester
- LCD voltage readout
- Red/green indicator for positive/negative
- 4m maximum extension coiled Polyurethane cable
- Probe 304 stainless steel
- Do not use on airbag systems

€41.42

£33.95



**HURRICANE**

**UNIVERSAL BACK PROBE & ALLIGATOR CLIP SET**

**SIN-400.3111**

- 17-piece set
- For use with most multimeters using standard banana plug connectors
- Works with 0.27 to 0.040 wire sizes
- Alligator clips for secure ground connections
- Each size probe is supplied in straight | 45° and 90°

€38.98

£31.95



**CORDLESS POCKET CIRCUIT TESTER**  
**SIN-400.3117**

**POWERHAND**

- 3-30 volt DC volt detection range
- Can be used on 6/12/24 volt systems
- Cordless design earths through the user
- Bi-direction polarity testing
- Red LED for positive | green for ground + audible tone
- Compact size
- Probe tip 304 stainless steel
- Body polycarbonate (PC) plastic

€31.66

£25.95

**POWERHAND**

GET THE JOB DONE RIGHT

**FLUID TRANSFER PUMP**

**SIN-900.0558**

- Portable universal pump for extracting or transferring oils & diesel fuel
- Quiet 70db pump unit
- Powered from 12v battery using battery alligator clamps
- Max flow rate
- Oil 3,6 L/min
- Diesel fuel 5 L/min

€49.96

£40.95



**VACCUUM OIL & FLUID EXTRACTOR**

**SIN-900.0541**

**POWERHAND**

- Capacity 9.5 litre
- For the extraction of all types of engine, transmission and other lubricating oil from cars, motorcycles, vans, marine engines and industrial machinery
- Includes 2 flexible suction tubes
- Manual and air operation for fluid evacuation
- Suitable for other low-viscosity fluids such as water/anti-freeze etc
- Automatic shutoff valve prevents unit overflowing
- 5ft main flexible hose for good reach to taller vehicles/inaccessible areas
- Working pressure 5.8 bar
- Max pressure 8.3 bar

€169.53

£138.95

**UNIVERSAL OIL FUNNEL**

**SIN-900.0542**

**POWERHAND**

- Use for clean and efficient oil filling across a wide range of vehicles
- 2pc spout for restricted applications
- Transparent spout for ease of monitoring flow
- Spring loaded clamp opens 29-74mm
- Innovative design securely fixes into the filling point
- Dimensions 125dia x 250mm long



€36.54

£29.95

**ROUND FUNNEL SET**

**SIN-900.0543**

**POWERHAND**

- Fit together for easy storage
- Suitable for petrol, diesel, oil, brake fluid, anti-freeze & windscreen wash
- Set includes 50mm, 75mm, 100mm & 120mm dia funnels



€6.04

£4.95

**FLUID DRAIN PAN BLACK**  
**SIN-900.0556-B**

- Use with oil, water, antifreeze etc
- Front and rear grab/support handles
- Directional spout for easy emptying
- Capacity 16 litres
- Polyethylene (PE)
- Diameter 450mm
- Weight 985g (empty)

**POWERHAND**

**FLUID DRAIN PAN GREEN**  
**SIN-900.0556-G**

- Use with oil, water, antifreeze etc
- Front and rear grab/support handles
- Directional spout for easy emptying
- Capacity 16 litres
- Polyethylene (PE)
- Diameter 450mm
- Weight 985g (empty)

**POWERHAND**



€28.00

£22.95

€28.00

£22.95

**POWERHAND**

**TAP DRIVE SOCKET SET**  
**SIN-450.0500**

- Use when driving taps with a ratchet where access is poor
- Magnetic socket ensures tap die will not drop or slip
- Socket numbers 1-4 1/4" drive
- Socket numbers 5-8 3/8" drive

€31.66

£25.95



GET THE JOB DONE RIGHT

POWERHAND

POWERHAND

**XL FLANK DRIVE SPANNER SET**

**SIN-170.0003**

- 16-piece set
- Full mirror polished chrome
- 15° offset jaw
- V-cut flank drive grips the fastener in 4 places
- XL design for added leverage
- Lengths 138 to 287mm
- 6mm | 7mm | 8mm | 9mm | 10mm | 11mm | 12mm | 13mm | 14mm | 15mm | 16mm | 17mm | 18mm | 19mm | 20mm | 21mm

€101.21

£82.95



POWERHAND



**DOUBLE-JOINTED COMBI/RATCHETING SPANNER SET**

**SIN-170.0009**

- 12-piece set
- Manufactured using hardened and tempered CR-V steel with a micro-satin finish
- Lengths 161 to 285mm
- Sizes: 8 | 9 | 10 | 11 | 12 | 13 | 14 | 15 | 16 | 17 | 18 | 19mm
- Supplied in dual-colour laser-cut EVA foam

€95.11

£77.95

## STUBBY DRILL BIT SET 1 - 10MM

SIN-450.0006

POWERHAND

- 19-piece set
- 1.0mm to 10.0mm in 0.5mm increments
- Made from M35 cobalt alloy for excellent performance in hard metals
- Stubby length enhances control and rigidity in tight spaces
- Suitable for high-temperature applications and tough materials
- Supplied in a robust, metal storage tin

€43.86

£35.95



POWERHAND

GET THE JOB DONE RIGHT

**3/8" IMPACT SOCKET SET  
SHALLOW & DEEP + UJ + EXTENSION  
KI-K38-1**

- 3/8" drive
- Supplied in blow moulded case
- 6 | 7 | 8 | 9 | 10 | 11 | 12 | 13 | 14 | 15 | 16 | 17 | 18 | 19 | 20 | 21 | 22 | 23 | 24mm
- Universal joint
- 75mm extension

€204.92

£167.95



**POWERHAND**



**POWERHAND**

**1/2" IMPACT SOCKET SET  
SHALLOW & DEEP + UJ + EXTENSION  
KI-K12-1**

- 1/2" drive
- Supplied in blow moulded case
- 10 | 11 | 12 | 13 | 14 | 15 | 16 | 17 | 18 | 19 | 20 | 21 | 22 | 23 | 24 | 26 | 27 | 30 | 32mm
- Universal joint
- 125mm extension

€251.28

£205.95

All prices are exclusive of VAT

**POWERHAND**

**1/2" COMPOSITE AIR IMPACT WRENCH 2170NM**

**SIN-300.1188**

- 3-speed & torque settings allow precise control
- Progressive rate trigger for improved fwd/rev and power setting lever
- Magnesium nose cone 40% stronger than standard alloy
- Lightweight design, only 1.6kg
- Powerful 6-vane air motor
- Max working torque 899nm
- Max breakaway torque 2170nm



€256.16

£209.95

**POWERHAND**

**1/2" COMPOSITE AIR IMPACT WRENCH 1492NM**

**SIN-300.1189**

- Use for the repair of wheel studs | bolts | nuts and hub threads
- Includes a wheel stud installer for new studs
- Split-die design allows alignment on undamaged thread sections for accurate restoration without further damage
- Includes precision cutting/reforming tools to clean and re-establish thread profiles
- External threads M12x1.25 | M12x1.5 | M14x1.5
- Internal threads: M12x1.25 | M12x 1.5 | M12x1.75 | M14x1.5



€171.97

£140.95

**3-16MM MINI TUBING CUTTER**

**SIN-900.0003**

- For clean and accurate cuts on copper | aluminum and steel tubing.
- Tubing cutter handles sizes 3-16mm
- Zinc alloy body with hardened steel blade

**POWERHAND**



€14.58

£11.95

**BRAKE PIPE BENDER**

**SIN-160.0025**

- For use on 1/4" and 3/16" brake lines
- 1/4 hex for higher leverage of more rigid stainless lines

**POWERHAND**



€30.44

£24.95

## POWERHAND

### 16" GROOVE LOCK WATER PUMP PLIERS

SIN-900.0526

- Push-button for easy press & slide adjustment
- Ergonomic soft grip handle
- CR-V drop forged, heat-treated construction

€54.84

£44.95



## POWERHAND

### 16" WATER PUMP PLIER GRIPS

SIN-900.0527

- Groove joint for multi-adjustment
- Dipped handle for secure non-slip grip
- Grade 45 carbon steel for longevity
- Jaw size 75mm

€40.20

£32.95



## POWERHAND

### 20" WATER PUMP PLIER GRIPS

SIN-900.0528

- Groove joint for multi-adjustment
- Dipped handle for secure non-slip grip
- Grade 45 carbon steel for longevity
- Jaw size 130mm

€82.91

£67.95



**AUTHORISED DEALER**